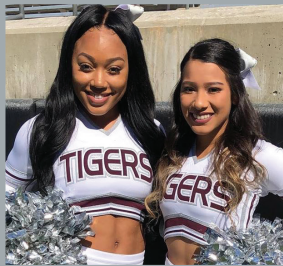




TSU

TEXAS SOUTHERN UNIVERSITY

Division of Student Services
& Enrollment Management



STUDENT HEALTH SERVICES

The mission of Student Health Services is to facilitate the academic success of the TSU student by providing high quality, cost effective healthcare and providing information on disease prevention and health promotion campus wide.

CLINIC SERVICES:

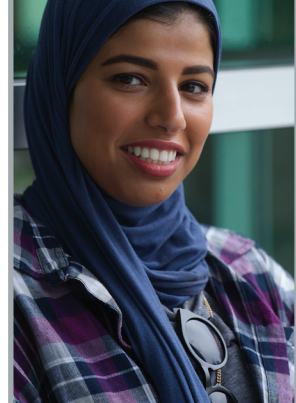
Health services provides routine medical care in an ambulatory care setting. Medical care is available during the fall and spring semesters and during each summer session to all registered students paying the medical services fee. Services provided include medical treatment for illness and injuries, tuberculosis evaluations, seasonal flu shots, confidential HIV testing and counseling, and referrals to specialist.

CLINIC VISITS:

Office visits at the clinic are free and include your exam/evaluation, diagnosis treatment, on-hand medications and supplies. To receive services at the clinic, you must be enrolled for the current semester or current summer session and present your Tiger One Card. All services received outside of the clinic are the financial responsibility of the patient.

STUDENT HEALTH INSURANCE:

Health insurance is required for our international students who are automatically enrolled in the university sponsored Student Health Insurance plan. International students can waive this insurance if they have comparable insurance. All interested students are invited to contact the university sponsored insurance company directly for information on enrollment and costs.



IMMUNIZATION REQUIREMENT:

Incoming students, 21 years old and younger, must provide proof of vaccination against bacterial meningitis (ACWY), at least 10 days before attending classes. Records must be submitted directly to Student Health Services at <https://tsu.medicatconnect.com>. For detailed information on the immunization requirement, bacterial meningitis, exemptions or for assistance with submitting your documents go to www.tsu.edu/health or call us at 713-313-7173.

HEALTH PROMOTIONS:

Understanding that college life extends beyond the classroom, we design health promotion programs to encourage and promote healthy living.

Health Services has a responsibility the TSU community to insure adequate health information is disseminated in order to minimize the spread of infectious diseases, and to insure informed decision-making takes place involving your health now and in the future.



LOCATION:

SHS is located inside the Student Health Center on Tierwester, next to the campus radio station, KTSU.

HOURS OF OPERATION:

Monday through Friday from 8:00 a.m. to 5:00 p.m. An after-hours nurse advice line is available when the clinic is closed. The nurse advice line can be reached at 833-631-1072.

PARKING:

Parking is available for patients on a first-come, first-serve basis in Lot M, in front of the Student Health Center. Park in the spaces marked, "Health Center Parking".



ANNUAL PROGRAMMING INCLUDES:

- Annual HIV/STI presentations
- Weekly HIV/STI testing
- TSU's Annual Health & Wellness Fair
- Outreach focusing on sexual health and healthy relations
- Peer lead health promotions events presented by our Peer Advocates for Wellness (PAW's) during the fall and spring semesters, such as, "Let's Knock Out Breast Cancer".

At this breast cancer awareness event, students learn about the signs and symptoms of breast cancer and are taught how to perform breast self-exams.

PEER ADVOCATES FOR WELLNESS (PAW'S):

The Peer Advocates for Wellness are our student volunteers who assist with health promotions during the fall and spring semesters. Interested students can begin the process of becoming a member of PAW's by completing the PAW's application found on our website at www.tsu.edu/health.



Confidentiality: All information in the student's medical record is confidential. Medical information is released to patients upon written request or as required by law.