

TOTAL STUDENT ENROLLMENT / FTE¹ Fall 1998 - 2002

	1998	FTE % Of Head- Count	1999	FTE % Of Head- Count	2000	FTE % Of Head- Count	2001	FTE % Of Head- Count	2002	FTE % Of Head- Count
Headcount	6,316		6,522		6,886		8,119		9,739	
FTE	5,353	85	5,445	83	5,796	84	6,989	86	8,461	87

¹Full-Time Equivalency (FTE) was computed as 15 semester hours for undergraduate students and 12 semester hours for graduate and professional students.

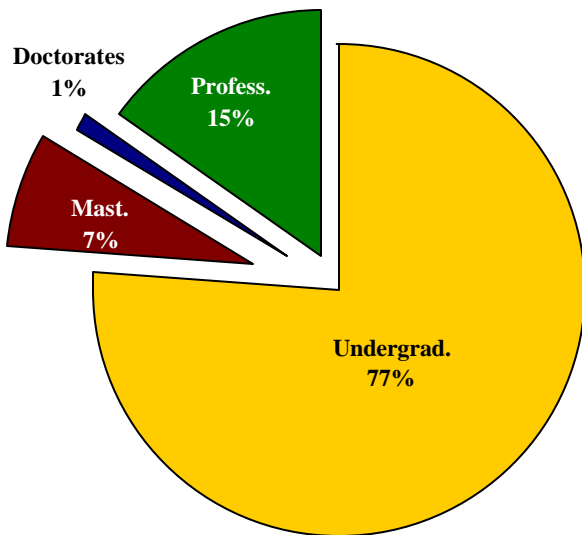


TOTAL STUDENT FTE¹ BY LEVEL Fall 1998 - 2002

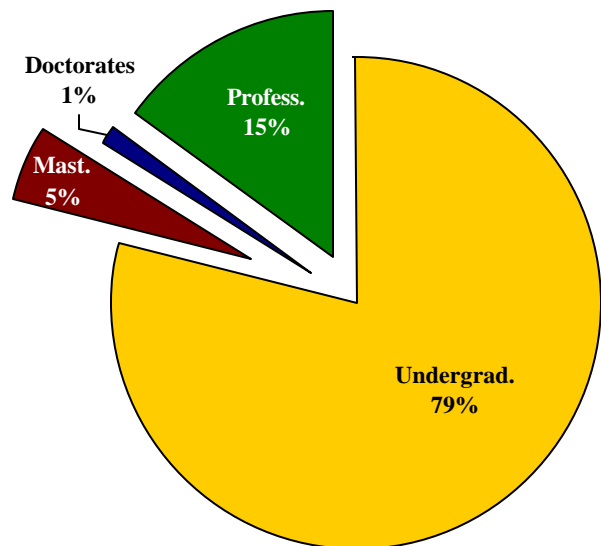
	1998	% Of Total	1999	% Of Total	2000	% Of Total	2001	% Of Total	2002	% Of Total
Undergraduates	4,080	77	4,193	77	4,480	65	5,665	81	6,803	79
Master's	395	7	331	6	416	7	411	6	378	5
Doctorates	59	1	49	1	49	1	41	1	49	1
Professional Students	819	15	872	16	851	27	872	12	1,231	15
Total	5,353	100	5,445	100	5,796	100	6,989	100	8,461	100

¹Full-Time Equivalency (FTE) was computed as 15 semester hours for undergraduate students and 12 semester hours for graduate and professional students.

**Total Student FTE By Level
1998**



**Total Student FTE By Level
2002**



**TOTAL STUDENT SEMESTER CREDIT
HOURS BY LEVEL
Fall 1998 - 2002**

	1998	% Of Total	1999	% Of Total	2000	% Of Total	2001	% Of Total	2002	% Of Total
Undergraduates	61,204	80	62,897	81	67,214	81	84,977	84	102,047	82
Master's	4,740	6	3,968	5	5,002	6	4,936	5	4,531	4
Doctorates	706	1	589	1	582	1	487	1	588	1
Professional Students	9,829	13	10,466	13	10,198	12	10,469	10	14,774	13
Total	76,479	100	77,920	100	82,996	100	100,869	100	121,940	100



TOTAL STUDENT HEADCOUNT BY SCH LOAD FALL 1998 - 2002

SCH LOAD	1998	% Of Total	1999	% Of Total	2000	% Of Total	2001	% Of Total	2002	% Of Total
Less Than 3	290	5	357	6	23	0	33	>1	27	>1
3 -5	362	6	74	1	434	6	394	5	346	4
6 -8	723	11	805	12	796	12	743	9	817	8
9 -11	595	9	676	10	645	9	634	8	738	8
12 -14	2,280	36	2,622	40	2,950	43	3,835	47	4,926	51
15 -17	1,637	26	1,551	24	1,625	24	2,029	25	2,358	24
18 & Over	429	7	437	7	413	6	451	6	527	5
Total	6,316	100	6,522	100	6,886	100	8,119	100	9,739	100

LOWER LEVEL STUDENT HEADCOUNT BY SCH LOAD FALL 1998 - 2002

SCH LOAD	1998	% Of Total	1999	% Of Total	2000	% Of Total	2001	% Of Total	2002	% Of Total
Less Than 3	13	1	56	2	9	1	14	>1	13	>1
3 -5	73	3	24	1	92	3	118	3	110	2
6 - 8	128	5	153	6	165	5	200	4	204	3
9 - 11	191	8	213	8	204	6	239	5	274	5
12 - 14	1,466	57	1677	62	1,991	62	2,898	64	3,931	67
15 - 17	560	22	485	18	659	20	957	21	1,225	21
18 & Over	110	4	91	3	106	3	129	3	145	2
Total	2,541	100	2,699	100	3,226	100	4,555	100	5,902	100

Lower level refers to freshman and sophomore students.

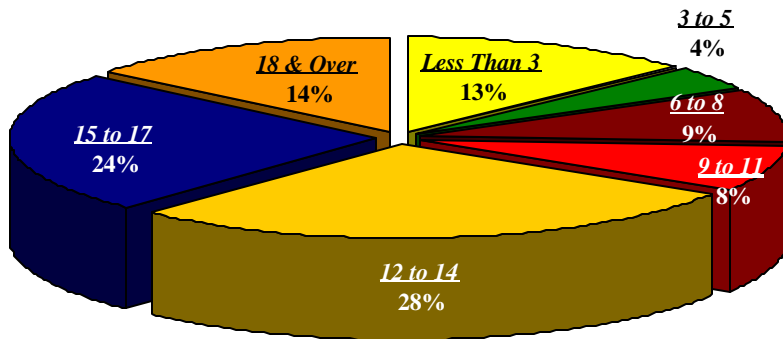


UPPER LEVEL STUDENT HEADCOUNT BY SCH LOAD FALL 1998 - 2002

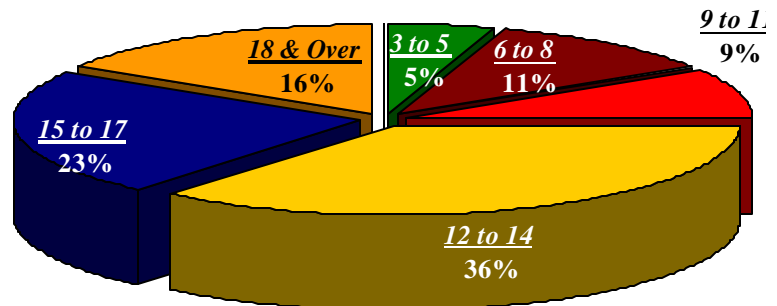
SCH LOAD	1998	% Of Total	1999	% Of Total	2000	% Of Total	2001	% Of Total	2002	% Of Total
Less Than 3	276	13	85	8	10	1	11	1	7	0
3 - 5	85	4	18	2	139	7	100	5	90	5
6 - 8	193	9	166	15	237	12	201	10	217	11
9 - 11	166	8	141	13	208	10	197	10	172	9
12 - 14	630	28	336	29	625	32	626	31	712	36
15 - 17	516	24	195	17	461	23	549	28	446	23
18 & Over	307	14	191	16	300	15	306	15	303	16
Total	2,173	100	1,132	100	1,980	100	1,990	100	1,946	100

Upper level refers to junior and senior students.

**Upper Level Student Headcount By SCH Load
1998**



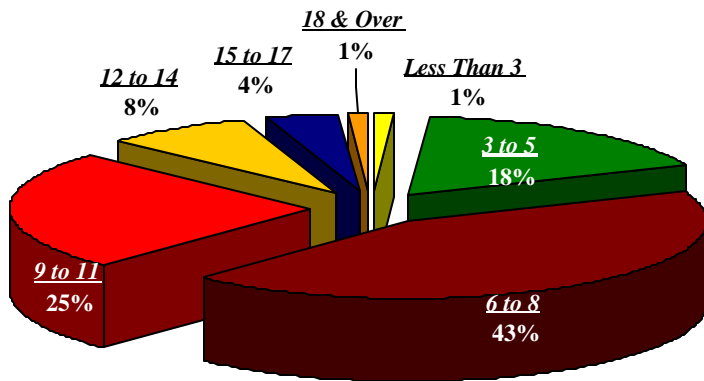
Upper Level Student Headcount By SCH Load 2005



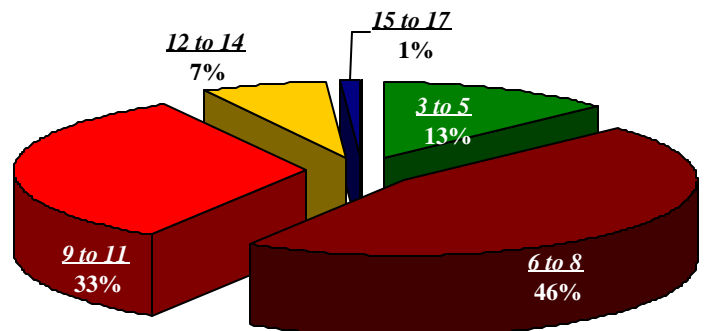
MASTER'S HEADCOUNT BY SCH LOAD FALL 1998 - 2002

SCH LOAD	1998	% Of Total	1999	% Of Total	2000	% Of Total	2001	% Of Total	2002	% Of Total
Less Than 3	1	1	167	20	2	>1	4	1	3	0
3 - 5	148	18	7	1	146	18	120	16	93	13
6 - 8	351	43	382	45	354	42	301	39	323	46
9 - 11	203	25	207	24	199	24	168	22	235	33
12 - 14	65	8	62	7	74	9	87	11	46	7
15 - 17	31	4	14	2	55	6	76	10	6	1
18 & Over	9	1	6	1	4	1	7	1	0	0
Total	808	100	845	100	834	100	763	100	706	100

**Master's Headcount By SCH Load
1998**



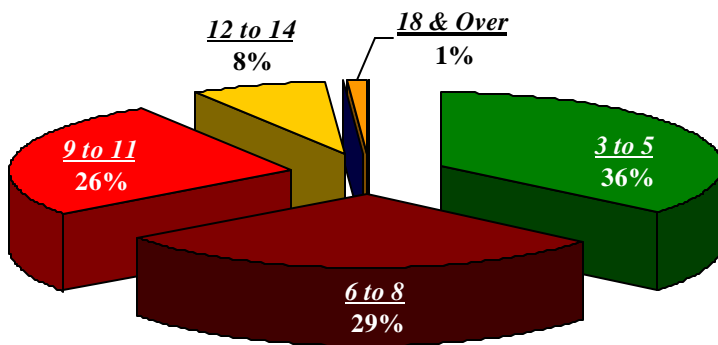
Master's Headcount By SCH Load 2002



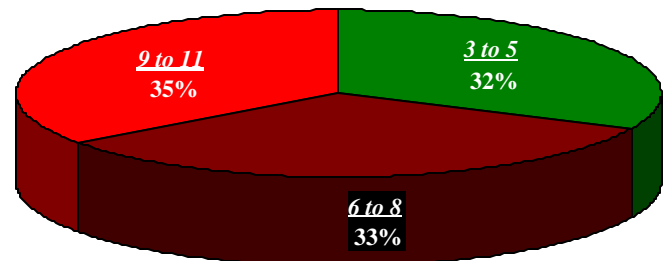
DOCTORAL STUDENT HEADCOUNT BY SCH LOAD FALL 1998 - 2002

SCH LOAD	1998	% Of Total	1999	% Of Total	2000	% Of Total	2001	% Of Total	2002	% Of Total
Less Than 3	0	0	30	29	0	0	0	0	0	0
3 – 5	44	36	3	3	49	45	33	35	32	32
6 – 8	35	29	29	28	27	25	33	35	33	33
9 – 11	32	26	21	20	25	23	23	24	36	35
12 – 14	10	8	14	13	6	6	5	5	0	0
15 – 17	0	0	4	4	1	>1	1	1	0	0
18 & Over	1	1	3	3	0	0	0	0	0	0
Total	122	100	104	100	108	99	95	100	101	100

**Doctoral Headcount By SCH Load
1998**



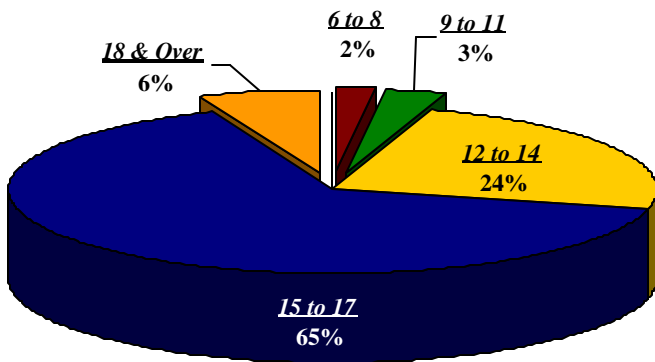
**Doctoral Headcount By SCH Load
2002**



PROFESSIONAL STUDENT HEADCOUNT BY SCH LOAD FALL 1998 - 2002

SCH LOAD	1998	% Of Total	1999	% Of Total	2000	% Of Total	2001	% Of Total	2002	% Of Total
Less Than 3	2	>1	2	>1	2	0	4	0	4	0
3-5	2	>1	8	1	10	1	25	2	21	2
6-8	24	2	13	2	15	1	9	1	40	4
9-11	30	3	9	1	13	1	10	1	21	2
12-14	263	24	254	34	435	32	385	29	237	22
15-17	700	65	449	62	884	65	878	66	682	63
18 & Over	65	6	3	>1	4	0	10	1	79	7
Total	1,086	100	738	100	1,363	100	1,321	100	1,084	100

**Professional Headcount By SCH Load
1998**



**Professional Headcount By SCH Load
2002**

