

TOTAL STUDENT ENROLLMENT / FTE*
Fall 1999 - 2003

	1999	FTE % Of Head- Count	2000	FTE % Of Head- Count	2001	FTE % Of Head- Count	2002	FTE % Of Head- Count	2003	FTE % Of Head- Count
Headcount	6,522		6,886		8,119		9,739		10,888	
FTE	5,445	83	5,796	84	6,989	86	8,461	87	9,585	88

*Full-Time Equivalency (FTE) was computed as 15 semester hours for undergraduate students and 12 semester hours for graduate and professional students.

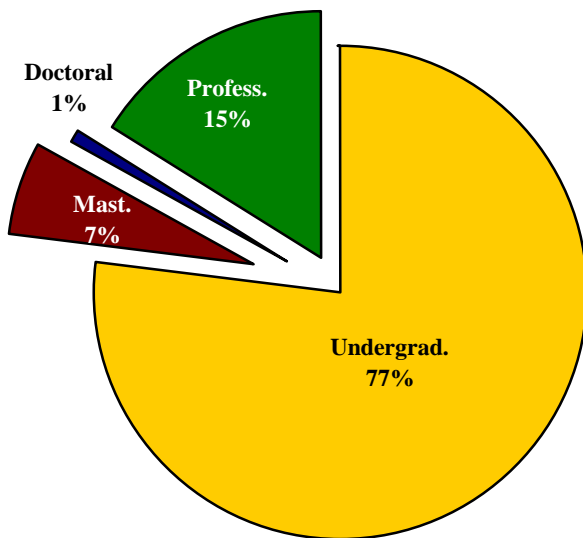


TOTAL STUDENT FTE* BY LEVEL Fall 1999 - 2003

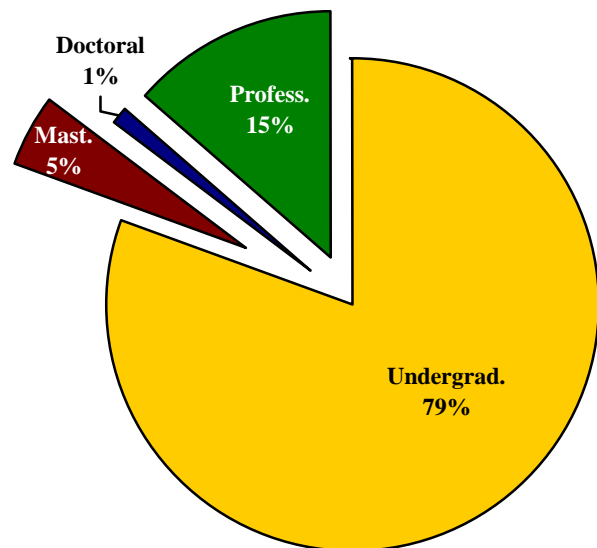
Level	1999	% of Total	2000	% of Total	2001	% of Total	2002	% of Total	2003	% of Total
Undergraduates	4,193	77	4,480	65	5,665	81	6,803	79	7,731	79
Master's	331	7	416	7	411	6	378	5	456	5
Doctoral	49	1	49	1	41	1	49	1	83	1
Professional Students	872	16	851	27	872	12	1,231	15	1,315	15
Total	5,445	100	5,796	100	6,989	100	8,461	100	9,585	100

*Full-Time Equivalency (FTE) was computed as 15 semester hours for undergraduate students and 12 semester hours for graduate and professional students.

**Total Student FTE By Level
1999**



**Total Student FTE By Level
2003**



**TOTAL STUDENT SEMESTER CREDIT
HOURS BY LEVEL
Fall 1999 - 2003**

Level	1999	% of Total	2000	% of Total	2001	% of Total	2002	% of Total	2003	% of Total
Undergraduates	62,897	81	67,214	81	84,977	84	102,047	82	115,964	84
Master's	3,968	5	5,002	6	4,936	5	4,531	4	5,471	4
Doctoral	589	1	582	1	487	1	588	1	990	1
Professional Students	10,466	13	10,198	12	10,469	10	14,774	13	15,781	11
Total	77,920	100	82,996	100	100,869	100	121,940	100	138,206	100



TOTAL STUDENT HEADCOUNT BY SCH LOAD FALL 1999 - 2003

SCH Load	1999	% of Total	2000	% of Total	2001	% of Total	2002	% of Total	2003	% of Total
Less Than 3	19	0	23	0	33	<1	27	<1	20	<1
3 -5	417	6	434	6	394	5	346	4	292	3
6 -8	806	12	796	12	743	9	817	8	796	7
9 -11	691	11	645	9	634	8	738	8	899	8
12 -14	2,608	40	2,950	43	3,835	47	4,926	51	5,490	51
15 -17	1,547	24	1,625	24	2,029	25	2,358	24	2,816	26
18 & Over	434	7	413	6	451	6	527	5	575	5
Total	6,522	100	6,886	100	8,119	100	9,739	100	10,888	100

LOWER LEVEL STUDENT HEADCOUNT BY SCH LOAD* FALL 1999 - 2003

SCH Load	1999	% of Total	2000	% of Total	2001	% of Total	2002	% of Total	2003	% of Total
Less Than 3	7	0	9	1	14	<1	13	<1	5	<1
3 -5	76	3	92	3	118	3	110	2	76	1
6 - 8	152	6	165	5	200	4	204	3	194	3
9 - 11	223	8	204	6	239	5	274	5	321	5
12 - 14	1,667	62	1,991	62	2,898	64	3,931	67	4,289	65
15 - 17	482	18	659	20	957	21	1,225	21	1,554	23
18 & Over	91	3	106	3	129	3	145	2	176	3
Total	2,698	100	3,226	100	4,555	100	5,902	100	6,615	100

*Lower level refers to freshman and sophomore students.



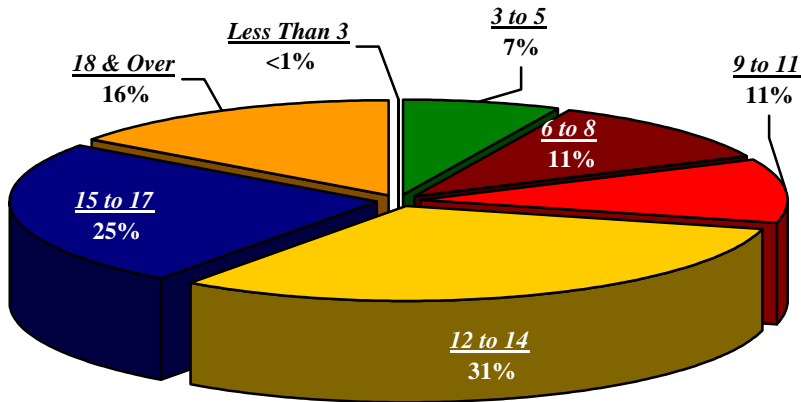
UPPER LEVEL STUDENT HEADCOUNT BY SCH LOAD*

FALL 1999 - 2003

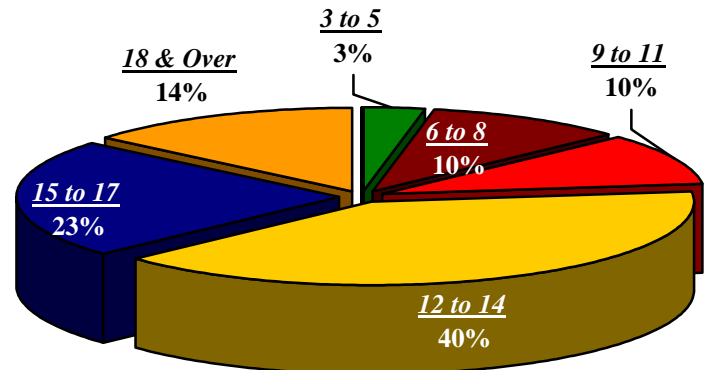
SCH Load	1999	% of Total	2000	% of Total	2001	% of Total	2002	% of Total	2003	% of Total
Less Than 3	7	0	10	1	11	1	7	0	9	0
3 - 5	142	7	139	7	100	5	90	5	78	3
6 - 8	248	11	237	12	201	10	217	11	221	10
9 - 11	244	11	208	10	197	10	172	9	226	10
12 - 14	669	31	625	32	626	31	712	36	917	40
15 - 17	537	25	461	23	549	28	446	23	537	23
18 & Over	335	15	300	15	306	15	303	16	329	14
Total	2,182	100	1,980	100	1,990	100	1,946	100	2,317	100

*Upper level refers to junior and senior students.

**Upper Level Student Headcount By SCH Load
1999**



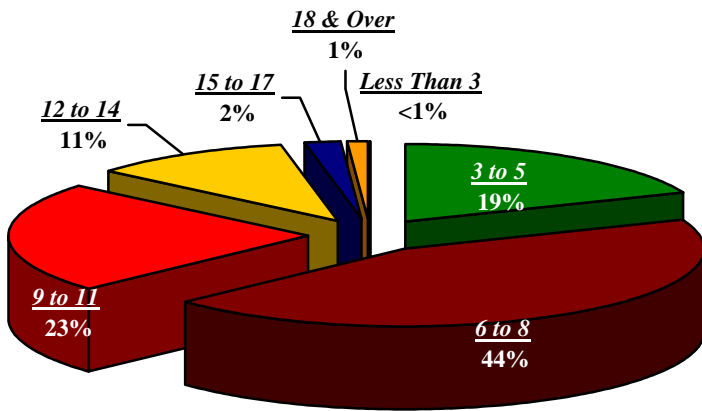
**Upper Level Student Headcount By SCH Load
2003**



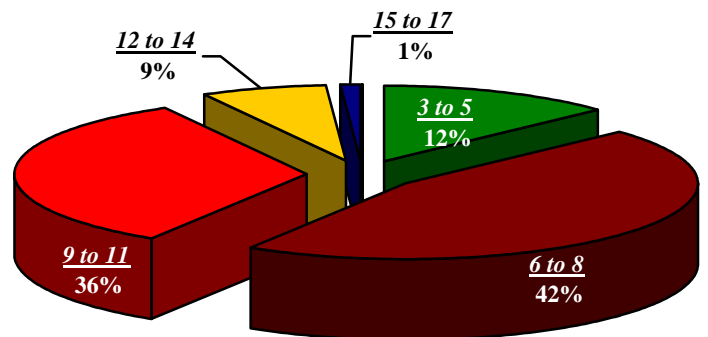
MASTER'S STUDENT HEADCOUNT BY SCH LOAD FALL 1999 - 2003

SCH Load	1999	% of Total	2000	% of Total	2001	% of Total	2002	% of Total	2003	% of Total
Less Than 3	3	0	2	<1	4	1	3	0	3	0
3 - 5	153	19	146	18	120	16	93	13	89	12
6 - 8	376	44	354	42	301	39	323	46	296	42
9 - 11	197	23	199	24	168	22	235	33	264	36
12 - 14	97	11	74	9	87	11	46	7	64	9
15 - 17	13	2	55	6	76	10	6	1	7	1
18 & Over	7	1	4	1	7	1	0	0	1	0
Total	846	100	834	100	763	100	706	100	724	100

**Master's Headcount By SCH Load
1999**



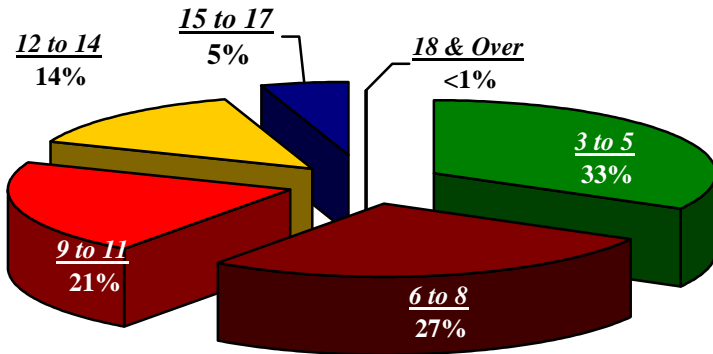
**Master's Headcount By SCH Load
2003**



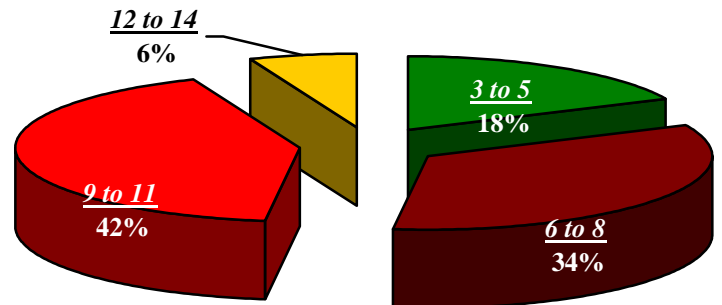
DOCTORAL STUDENT HEADCOUNT BY SCH LOAD FALL 1999 - 2003

SCH Load	1999	% of Total	2000	% of Total	2001	% of Total	2002	% of Total	2003	% of Total
Less Than 3	0	0	0	0	0	0	0	0	0	0
3-5	34	33	49	45	33	35	32	32	26	18
6-8	28	27	27	25	33	35	33	33	48	34
9-11	22	21	25	23	23	24	36	35	59	42
12-14	15	14	6	6	5	5	0	0	8	6
15-17	5	5	1	<1	1	1	0	0	0	0
18 & Over	0	0	0	0	0	0	0	0	0	0
Total	104	100	108	99	95	100	101	100	141	100

**Doctoral Headcount By SCH Load
1999**



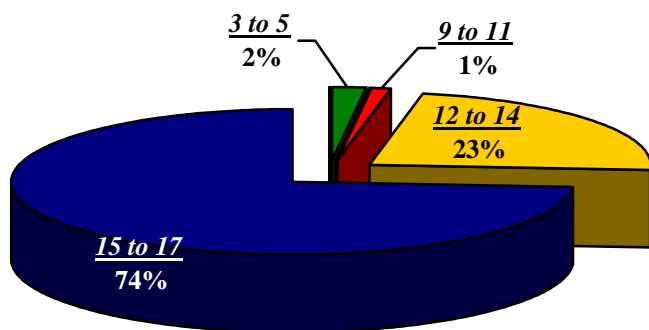
**Doctoral Headcount By SCH Load
2003**



PROFESSIONAL STUDENT HEADCOUNT BY SCH LOAD FALL 1999 - 2003

SCH Load	1999	% of Total	2000	% of Total	2001	% of Total	2002	% of Total	2003	% of Total
Less Than 3	2	0	2	0	4	0	4	0	3	0
3-5	12	2	10	1	25	2	21	2	23	2
6-8	2	0	15	1	9	1	40	4	37	3
9-11	5	1	13	1	10	1	21	2	29	3
12-14	160	23	435	32	385	29	237	22	212	19
15-17	510	74	884	65	878	66	682	63	718	67
18 & Over	1	0	4	0	10	1	79	7	69	6
Total	738	100	1,363	100	1,321	100	1,084	100	1,091	100

**Professional Headcount By SCH Load
1999**



**Professional Headcount By SCH Load
2003**

