

**FRONT PAGE  
DIVIDER  
ENROLLMENT STATISTICS**



**BACK PAGE  
DIVIDER  
ENROLLMENT STATISTICS**



**TOTAL STUDENT ENROLLMENT / FTE\***  
**Fall 2002 - 2006**

	2002	FTE % Of Head Count	2003	FTE % Of Head Count	2004	FTE % Of Head Count	2005	FTE % Of Head Count	2006	FTE % Of Head Count
<b>Headcount</b>	9,739		10,888		11,635		11,903		11,224	
<b>FTE</b>	8,461	<b>87</b>	9,585	<b>88</b>	10,240	<b>88</b>	10,180	<b>86</b>	9,778	<b>87</b>

\*Full-Time Equivalency (FTE) was computed as 15 semester hours for undergraduate students and 12 semester hours for graduate and professional students.

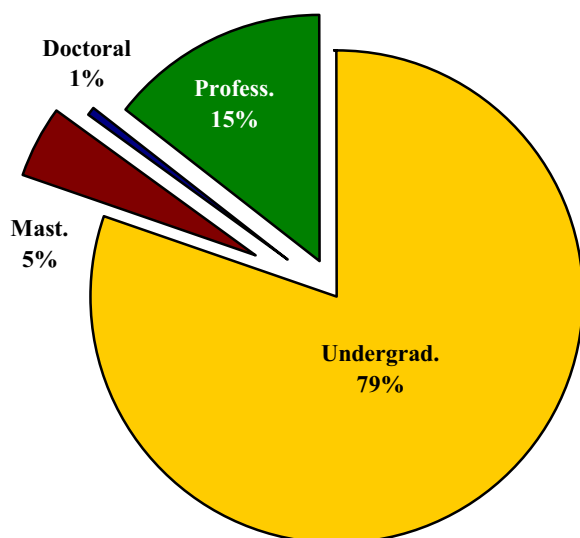


## TOTAL STUDENT FTE\* BY LEVEL Fall 2002 – 2006

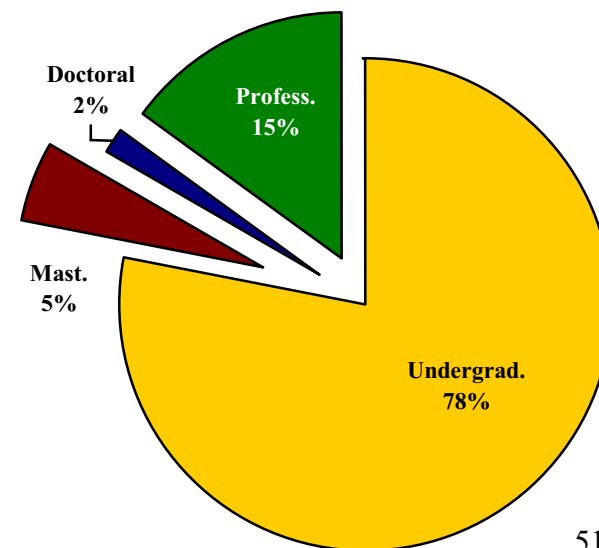
Level	2002	% of Total	2003	% of Total	2004	% of Total	2005	% of Total	2006	% of Total
<b>Undergraduates</b>	6,803	79	7,731	79	8,175	80	8,157	80	7,636	78
<b>Master's Students</b>	378	5	456	5	495	4	571	6	506	5
<b>Doctoral Students</b>	49	1	83	1	169	2	24	0	166	2
<b>Professional Students</b>	1,231	15	1,315	15	1,401	14	1,428	14	1,470	15
<b>Total</b>	<b>8,461</b>	<b>100</b>	<b>9,585</b>	<b>100</b>	<b>10,240</b>	<b>100</b>	<b>10,180</b>	<b>100</b>	<b>9,778</b>	<b>100</b>

\*Full-Time Equivalency (FTE) was computed as 15 semester hours for undergraduate students and 12 semester hours for graduate and professional students.

**Total Student FTE By Level  
2002**



**Total Student FTE By Level  
2006**



**TOTAL STUDENT SEMESTER CREDIT  
HOURS BY LEVEL  
Fall 2002 - 2006**

<b>Level</b>	<b>2002</b>	<b>% of Total</b>	<b>2003</b>	<b>% of Total</b>	<b>2004</b>	<b>% of Total</b>	<b>2005</b>	<b>% of Total</b>	<b>2006</b>	<b>% of Total</b>
<b>Undergraduates</b>	102,047	82	115,964	84	122,618	84	122,361	83	114,540	82
<b>Master's Students</b>	4,531	4	5,471	4	5,942	4	6,850	5	6,072	4
<b>Doctoral Students</b>	588	1	990	1	2,031	1	288	0	1,992	1
<b>Professional Students</b>	14,774	13	15,781	11	16,817	11	17,137	12	17,640	13
<b>Total</b>	<b>121,940</b>	<b>100</b>	<b>138,206</b>	<b>100</b>	<b>147,408</b>	<b>100</b>	<b>146,636</b>	<b>100</b>	<b>140,246</b>	<b>100</b>



## TOTAL STUDENT HEADCOUNT BY SCH LOAD FALL 2002 - 2006

SCH Load	2002	% of Total	2003	% of Total	2004	% of Total	2005	% of Total	2006	% of Total
Less Than 3	27	<1	20	<1	10	0	36	1	36	0
3 -5	346	4	292	3	267	2	344	3	274	2
6 -8	817	8	796	7	880	8	1,000	9	952	8
9 -11	738	8	899	8	1,080	9	1,429	12	1,110	10
12 -14	4,926	51	5,490	51	5,820	50	5,181	45	5,416	48
15 -17	2,358	24	2,816	26	3,061	26	2,924	25	2,911	26
18 & Over	527	5	575	5	499	5	564	5	525	5
<b>Total</b>	<b>9,739</b>	<b>100</b>	<b>10,888</b>	<b>100</b>	<b>11,635</b>	<b>100</b>	<b>11,478</b>	<b>100</b>	<b>11,224</b>	<b>100</b>

Source: Texas Higher Education Coordinating Board (Hurricane Katrina students omitted from count). Fall, 2005



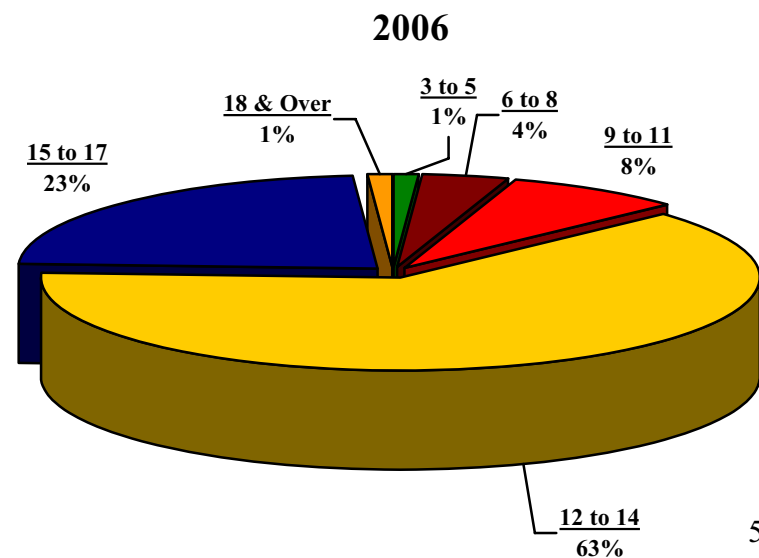
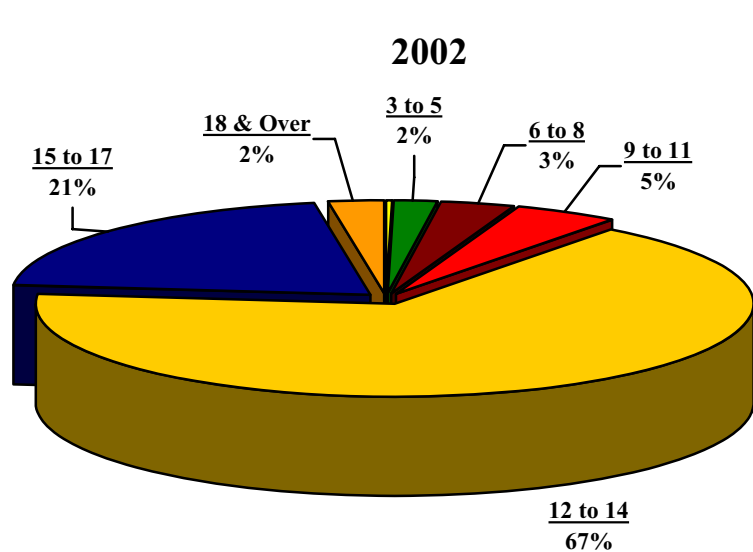
## LOWER LEVEL STUDENT HEADCOUNT BY SCH LOAD\*

### FALL 2002 - 2006

SCH Load	2002	% of Total	2003	% of Total	2004	% of Total	2005	% of Total	2006	% of Total
Less Than 3	13	<1	5	<1	9	0	8	0	5	0
3 -5	110	2	76	1	72	1	86	1	61	1
6 - 8	204	3	194	3	277	4	308	5	232	4
9 - 11	274	5	321	5	455	7	720	12	461	8
12 - 14	3,931	67	4,289	65	4,217	63	3,539	57	3,534	63
15 - 17	1,225	21	1,554	23	1,548	23	1,395	23	1,324	23
18 & Over	145	2	176	3	138	2	120	2	84	1
<b>Total</b>	<b>5,902</b>	<b>100</b>	<b>6,615</b>	<b>100</b>	<b>6,716</b>	<b>100</b>	<b>6,176</b>	<b>100</b>	<b>5,701</b>	<b>100</b>

\*Upper level refers to junior and senior students.

Source: Texas Higher Education Coordinating Board (Hurricane Katrina students omitted from count). Fall, 2005

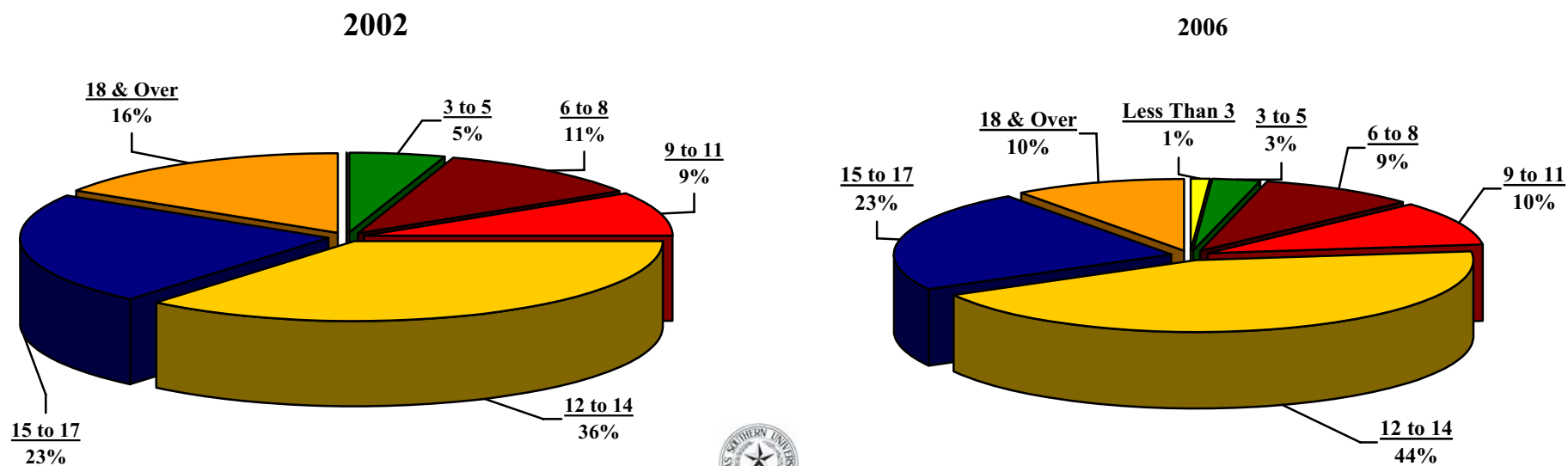


## UPPER LEVEL STUDENT HEADCOUNT BY SCH LOAD\* FALL 2002 - 2006

SCH Load	2002	% of Total	2003	% of Total	2004	% of Total	2005	% of Total	2006	% of Total
Less Than 3	7	0	9	0	0	0	23	1	27	1
3 -5	90	5	78	3	100	3	108	3	103	3
6 - 8	217	11	221	10	223	8	283	9	311	9
9 - 11	172	9	226	10	284	10	384	12	350	10
12 - 14	712	36	917	40	1,295	44	1,325	41	1,483	44
15 - 17	446	23	537	23	674	23	723	22	759	23
18 & Over	303	16	329	14	317	12	380	12	319	10
<b>Total</b>	<b>1,946</b>	<b>100</b>	<b>2,317</b>	<b>100</b>	<b>2,911</b>	<b>100</b>	<b>3,226</b>	<b>100</b>	<b>3,352</b>	<b>100</b>

\*Upper level refers to junior and senior students.

Source: Texas Higher Education Coordinating Board (Hurricane Katrina students omitted from count). Fall, 2005

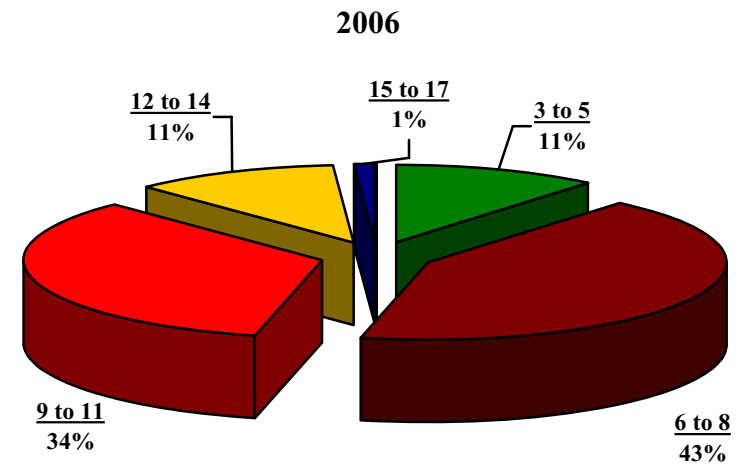
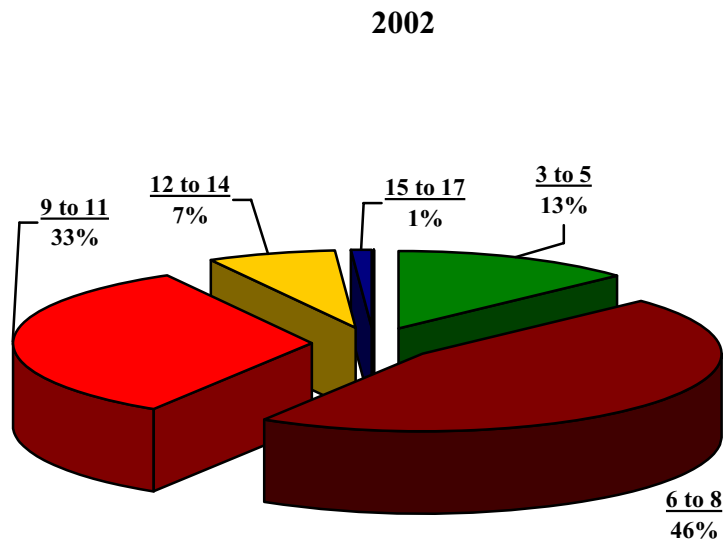




## MASTER'S STUDENT HEADCOUNT BY SCH LOAD FALL 2002 - 2006

SCH Load	2002	% of Total	2003	% of Total	2004	% of Total	2005	% of Total	2006	% of Total
Less Than 3	3	0	3	0	1	0	2	0	4	0
3 -5	93	13	89	12	68	9	91	13	92	11
6 - 8	323	46	296	42	311	43	319	45	342	43
9 - 11	235	33	264	36	260	36	244	34	276	34
12 - 14	46	7	64	9	80	11	59	8	88	11
15 - 17	6	1	7	1	8	1	0	0	6	1
18 & Over	0	0	1	0	1	0	0	0	3	0
<b>Total</b>	<b>706</b>	<b>100</b>	<b>724</b>	<b>100</b>	<b>729</b>	<b>100</b>	<b>715</b>	<b>100</b>	<b>811</b>	<b>100</b>

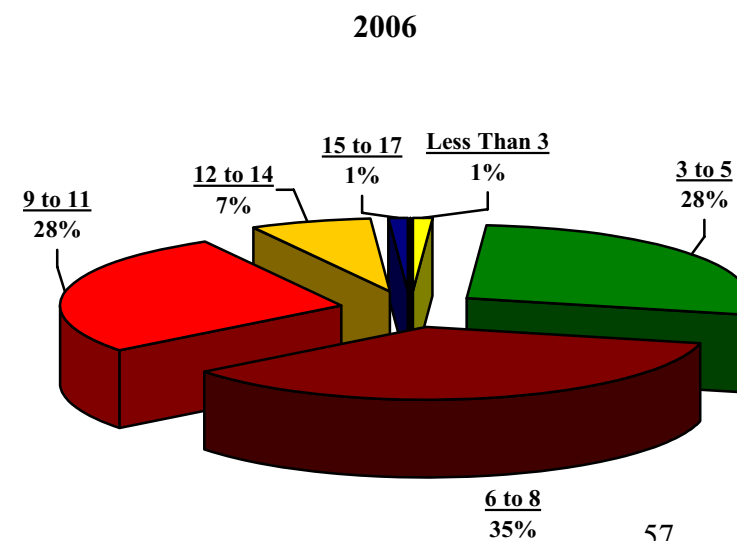
Source: Texas Higher Education Coordinating Board (Hurricane Katrina students omitted from count). Fall, 2005



## DOCTORAL STUDENT HEADCOUNT BY SCH LOAD FALL 2002 – 2006

SCH Load	2002	% of Total	2003	% of Total	2004	% of Total	2005	% of Total	2006	% of Total
Less Than 3	0	0	0	0	0	0	0	0	1	1
3 – 5	32	32	26	18	18	12	47	24	48	28
6 – 8	33	33	48	34	52	35	64	32	60	35
9 – 11	36	35	59	42	67	46	58	30	47	28
12 – 14	0	0	8	6	10	7	24	12	12	7
15 – 17	0	0	0	0	1	0	3	2	1	1
18 & Over	0	0	0	0	1	0	0	0	0	0
<b>Total</b>	<b>101</b>	<b>100</b>	<b>141</b>	<b>100</b>	<b>149</b>	<b>100</b>	<b>196</b>	<b>100</b>	<b>169</b>	<b>100</b>

Source: Texas Higher Education Coordinating Board (Hurricane Katrina students omitted from count). Fall, 2005



## PROFESSIONAL STUDENT HEADCOUNT BY SCH LOAD FALL 2002 - 2006

SCH Load	2002	% of Total	2003	% of Total	2004	% of Total	2005	% of Total	2006	% of Total
Less Than 3	4	0	3	0	0	0	3	0	0	0
3 – 5	21	2	23	2	9	1	12	1	10	1
6 – 8	40	4	37	3	17	2	26	2	21	2
9 – 11	21	2	29	3	14	1	23	2	12	1
12 – 14	237	22	212	19	218	19	234	20	260	22
15 – 17	682	63	718	67	830	73	803	70	808	68
18 & Over	79	7	69	6	42	4	64	5	80	7
<b>Total</b>	<b>1,084</b>	<b>100</b>	<b>1,091</b>	<b>100</b>	<b>1,130</b>	<b>100</b>	<b>1,165</b>	<b>100</b>	<b>1,191</b>	<b>100</b>

Source: Texas Higher Education Coordinating Board (Hurricane Katrina students omitted from count). Fall, 2005

