

**FRONT PAGE
DIVIDER
ENROLLMENT STATISTICS**



**BACK PAGE
DIVIDER
ENROLLMENT STATISTICS**



TOTAL STUDENT ENROLLMENT / FTE*

Fall 2004-2008

	Fall 2004	FTE % Of Head Count	Fall 2005	FTE % Of Head Count	Fall 2006	FTE % Of Head Count	Fall 2007	FTE % Of Head Count	Fall 2008	FTE % Of Head Count
Headcount	11,635		11,903		11,224		9,540		9,102	
FTE	10,240	88	10,180	86	9,778	87	8,187	86	7,820	86

*Full-Time Equivalency (FTE) was computed as 15 semester hours for undergraduate students and 12 semester hours for graduate and professional students.

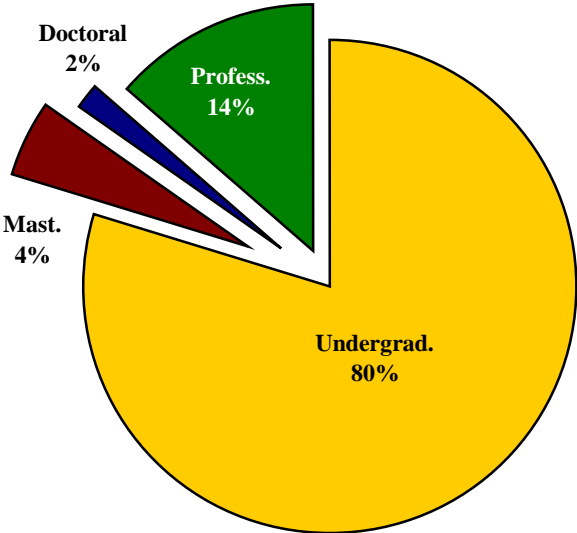


TOTAL STUDENT FTE* BY LEVEL Fall 2004-2008

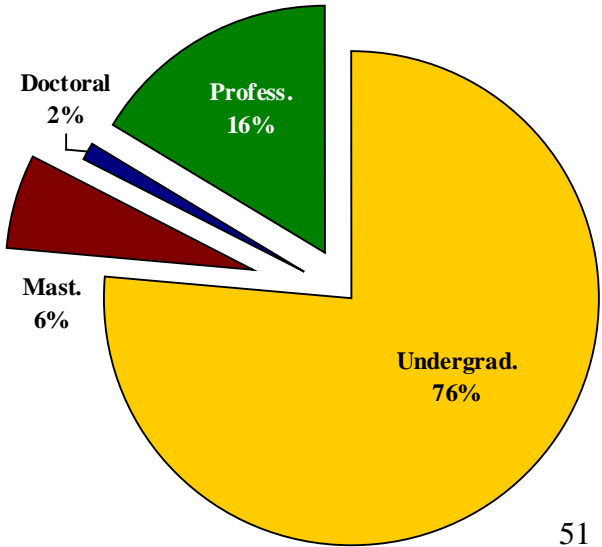
Level	Fall 2004	% of Total	Fall 2005	% of Total	Fall 2006	% of Total	Fall 2007	% of Total	Fall 2008	% of Total
Undergraduates	8,175	80	8,157	80	7,636	78	6,317	77	5,974	76
Master's Students	495	4	571	6	506	5	488	6	479	6
Doctoral Students	169	2	24	0	166	2	65	1	96	1
Professional Students	1,401	14	1,428	14	1,470	15	1,317	16	1,271	16
Total	10,240	100	10,180	100	9,778	100	8,187	100	7,820	100

*Full-Time Equivalency (FTE) was computed as 15 semester hours for undergraduate students and 12 semester hours for graduate and professional students.

**Total Student FTE By Level
Fall 2004**



**Total Student FTE By Level
Fall 2008**



**TOTAL STUDENT SEMESTER CREDIT
HOURS BY LEVEL
Fall 2004-2008**

Level	Fall 2004	% of Total	Fall 2005	% of Total	Fall 2006	% of Total	Fall 2007	% of Total	Fall 2008	% of Total
Undergraduates	122,618	84	122,361	83	114,540	82	94,757	81	89,612	80
Master's Students	5,942	4	6,850	5	6,072	4	5,864	5	5,748	5
Doctoral Students	2,031	1	288	0	1,992	1	775	1	1,155	1
Professional Students	16,817	11	17,137	12	17,640	13	15,800	13	15,248	14
Total	147,408	100	146,636	100	140,246	100	117,196	100	111,763	100



TOTAL STUDENT HEADCOUNT BY SCH LOAD Fall 2004-2008

SCH Load	Fall 2004	% of Total	Fall 2005	% of Total	Fall 2006	% of Total	Fall 2007	% of Total	Fall 2008	% of Total
Less Than 3	28	0	36	1	36	0	25	0	32	0
3 -5	267	2	344	3	274	2	277	3	251	3
6 -8	880	8	1,000	9	952	8	920	10	867	10
9 -11	1,080	9	1,429	12	1,110	10	1,104	12	1,052	12
12 -14	5,820	50	5,181	45	5,416	48	4,432	46	4,266	46
15 -17	3,061	26	2,924	25	2,911	26	2,365	25	2,252	25
18 & Over	499	5	564	5	525	5	417	4	382	4
Total	11,635	100	11,478	100	11,224	100	9,540	100	9,102	100

Source: Texas Higher Education Coordinating Board (Hurricane Katrina students omitted from count). Fall, 2005

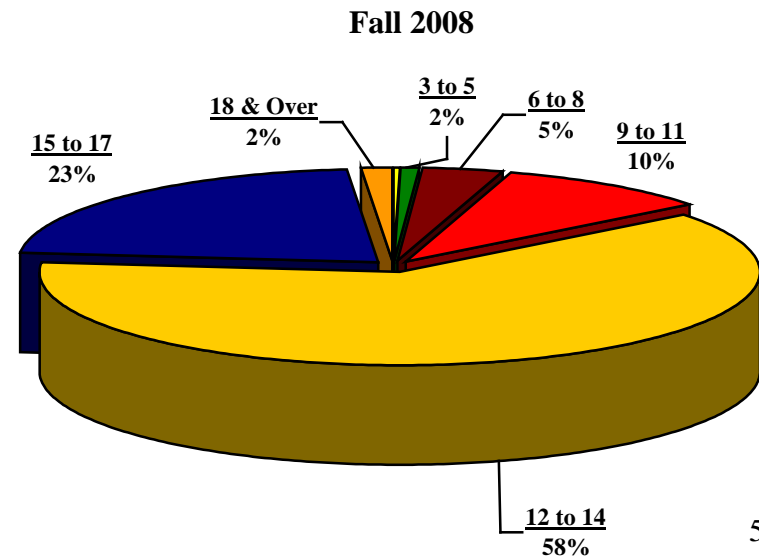
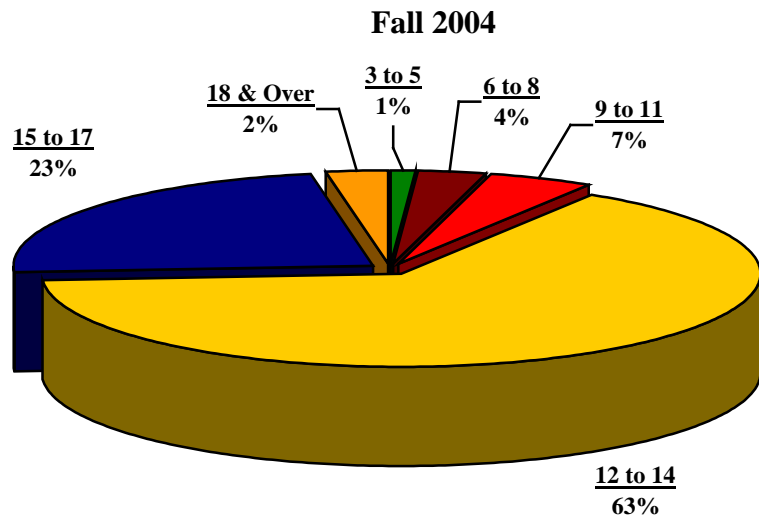


LOWER LEVEL STUDENT HEADCOUNT BY SCH LOAD* Fall 2004-2008

SCH Load	Fall 2004	% of Total	Fall 2005	% of Total	Fall 2006	% of Total	Fall 2007	% of Total	Fall 2008	% of Total
Less Than 3	9	0	8	0	5	0	3	0	10	0
3 - 5	72	1	86	1	61	1	60	2	40	2
6 - 8	277	4	308	5	232	4	223	5	150	5
9 - 11	455	7	720	12	461	8	459	10	410	10
12 - 14	4,217	63	3,539	57	3,534	63	2,597	58	2,643	58
15 - 17	1,548	23	1,395	23	1,324	23	1,025	23	928	23
18 & Over	138	2	120	2	84	1	79	2	61	2
Total	6,716	100	6,176	100	5,701	100	4,446	100	4,242	100

*Upper level refers to junior and senior students.

Source: Texas Higher Education Coordinating Board (Hurricane Katrina students omitted from count). Fall, 2005



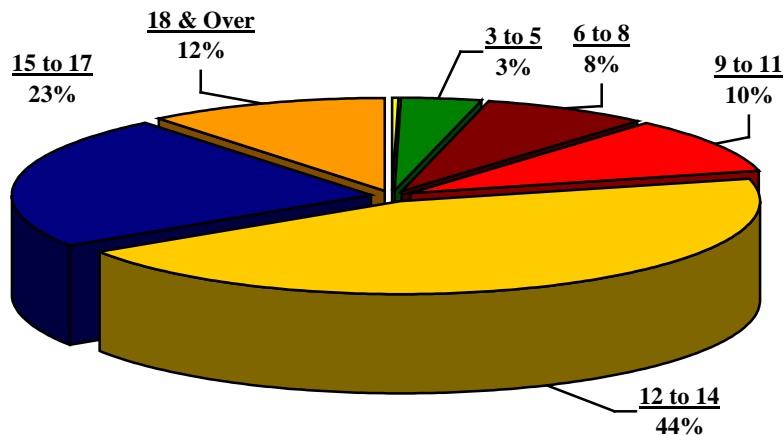
UPPER LEVEL STUDENT HEADCOUNT BY SCH LOAD* Fall 2004-2008

SCH Load	Fall 2004	% of Total	Fall 2005	% of Total	Fall 2006	% of Total	Fall 2007	% of Total	Fall 2008	% of Total
Less Than 3	17	0	23	1	27	1	16	1	12	1
3 - 5	100	3	108	3	103	3	112	3	99	3
6 - 8	223	8	283	9	311	9	288	9	274	9
9 - 11	284	10	384	12	350	10	351	11	332	11
12 - 14	1,295	44	1,325	41	1,483	44	1,371	44	1,250	44
15 - 17	674	23	723	22	759	23	712	23	641	23
18 & Over	317	12	380	12	319	10	276	9	273	9
Total	2,910	100	3,226	100	3,352	100	3,126	100	2,881	100

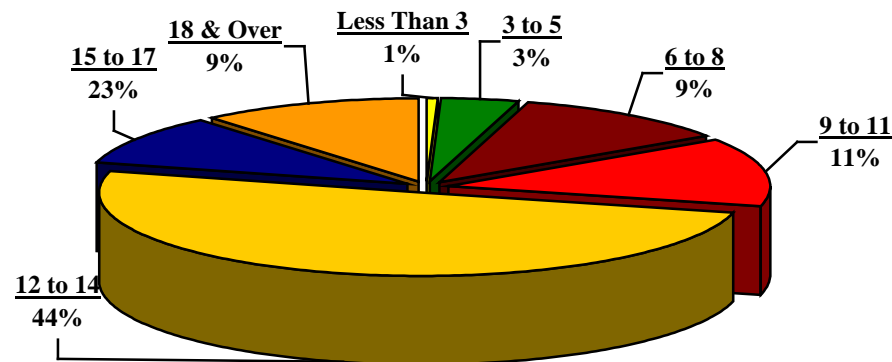
*Upper level refers to junior and senior students.

Source: Texas Higher Education Coordinating Board (Hurricane Katrina students omitted from count). Fall, 2005

Fall 2004



Fall 2008

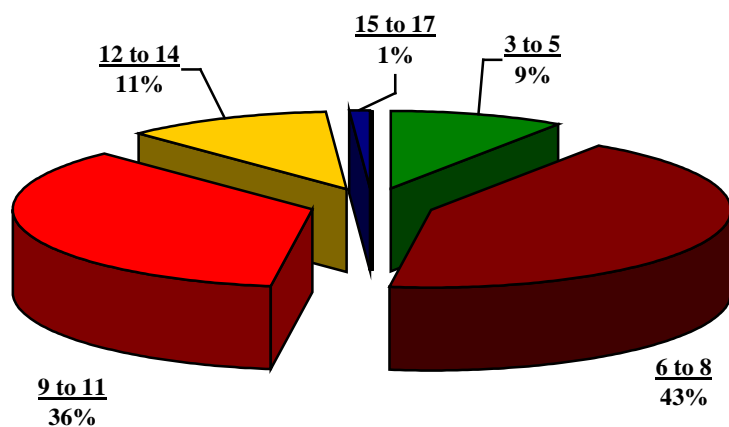


MASTER'S STUDENT HEADCOUNT BY SCH LOAD Fall 2004 - 2008

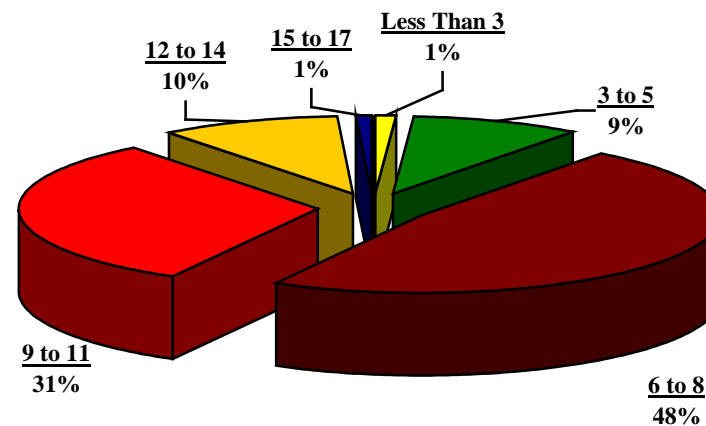
SCH Load	Fall 2004	% of Total	Fall 2005	% of Total	Fall 2006	% of Total	Fall 2007	% of Total	Fall 2008	% of Total
Less Than 3	2	0	2	0	4	0	5	1	8	1
3 -5	68	9	91	13	92	11	66	9	73	9
6 - 8	311	43	319	45	342	43	341	44	372	48
9 - 11	260	36	244	34	276	34	256	33	246	31
12 - 14	80	11	59	8	88	11	96	12	75	10
15 - 17	8	1	0	0	6	1	6	1	7	1
18 & Over	1	0	0	0	3	0	2	0	0	0
Total	730	100	715	100	811	100	772	100	781	100

Source: Texas Higher Education Coordinating Board (Hurricane Katrina students omitted from count). Fall, 2005

Fall 2004



Fall 2008

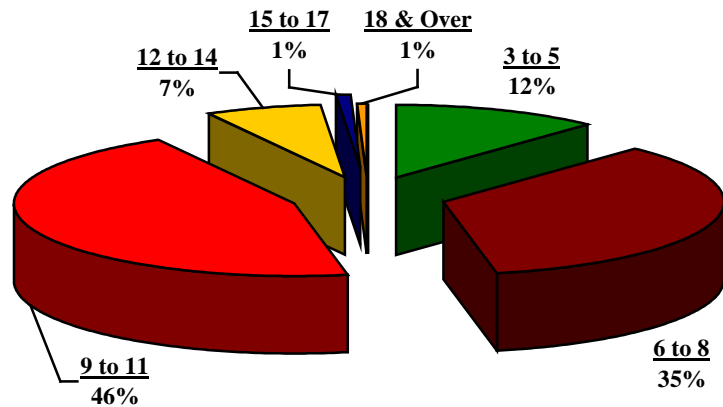


DOCTORAL STUDENT HEADCOUNT BY SCH LOAD Fall 2004 – 2008

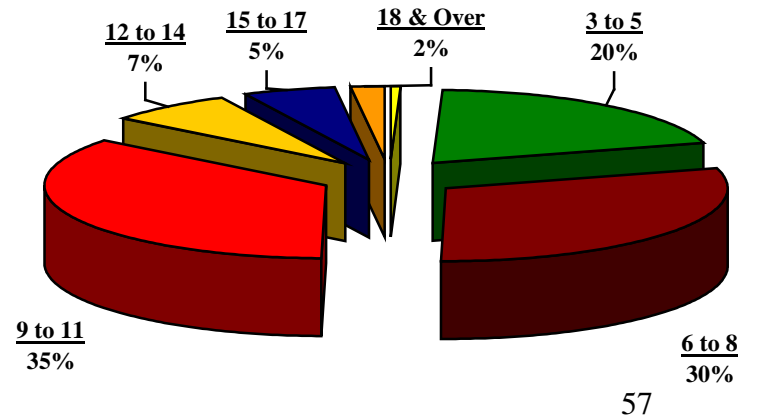
SCH Load	Fall 2004	% of Total	Fall 2005	% of Total	Fall 2006	% of Total	Fall 2007	% of Total	Fall 2008	% of Total
Less Than 3	0	0	0	0	1	1	0	0	1	0
3 – 5	18	12	47	24	48	28	29	27	30	20
6 – 8	52	35	64	32	60	35	43	39	45	30
9 – 11	67	46	58	30	47	28	21	19	53	35
12 – 14	10	7	24	12	12	7	8	7	11	7
15 – 17	1	0	3	2	1	1	5	5	8	5
18 & Over	1	0	0	0	0	0	3	3	3	2
Total	149	100	196	100	169	100	109	100	151	100

Source: Texas Higher Education Coordinating Board (Hurricane Katrina students omitted from count). Fall, 2005

Fall 2004



Fall 2008



PROFESSIONAL STUDENT HEADCOUNT BY SCH LOAD Fall 2004 - 2008

SCH Load	Fall 2004	% of Total	Fall 2005	% of Total	Fall 2006	% of Total	Fall 2007	% of Total	Fall 2008	% of Total
Less Than 3	0	0	3	0	0	0	1	0	1	0
3-5	9	1	12	1	10	1	10	1	9	1
6-8	17	2	26	2	21	2	25	2	18	2
9-11	14	1	23	2	12	1	17	2	11	1
12-14	218	19	234	20	260	22	360	33	287	28
15-17	830	73	803	70	808	68	617	57	668	64
18 & Over	42	4	64	5	80	7	57	5	45	4
Total	1,130	100	1,165	100	1,191	100	1,087	100	1,039	100

Source: Texas Higher Education Coordinating Board (Hurricane Katrina students omitted from count). Fall, 2005

